



syncEvolution

synchronizing personal information management data

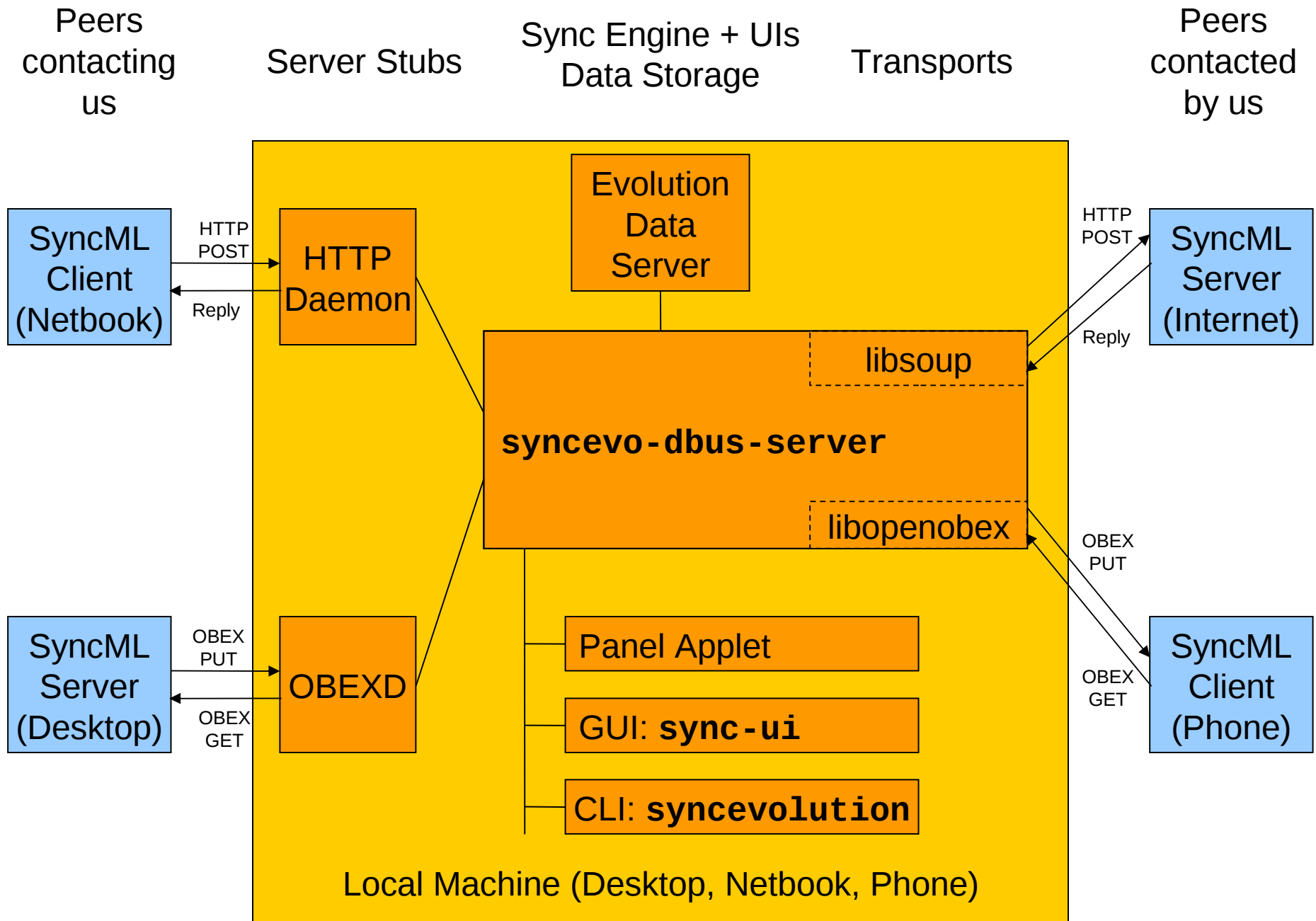


Patrick Ohly

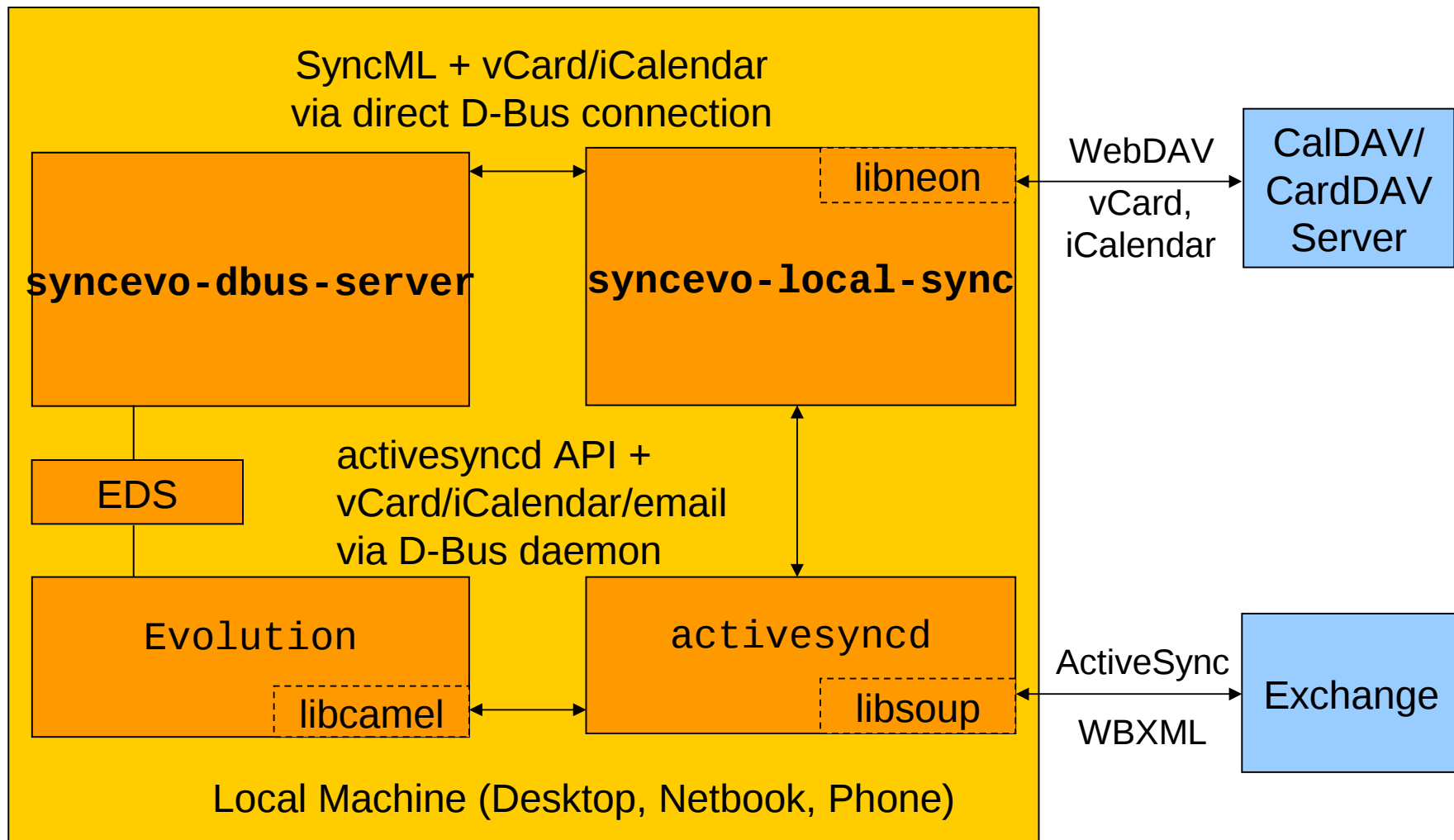
01.02.2012

History “The Missing Link”

- Spare time project since 2006, full-time since 2009
- Initial focus SyncML, both over the air and directly over Bluetooth
- “Local Sync”: connects two backends
 - CalDAV/CardDAV
 - ActiveSync
- PIM storage backends: Evolution, plain files, QtContacts/KCal (Nokia N9), Akonadi (experimental), XMLRPC
- Different frontends: GTK UI, command line, Qt (experimental)



CalDAV/CardDAV + ActiveSync + PBAP + ...



EDS Improvements

- Store and pass photos as files, managed by EDS
- Avoid redundant item parsing
- Global DB revision string (similar to CTag in DAV)
- Retrieve item meta data for change detection in sync

I Want You



To Sync

<http://syncevolution.org>

In development:

- Better local sync
- syncevo-dbus-server rewrite
- Automatic syncing
- PBAP backend (BMW CarIT)

Needs help:

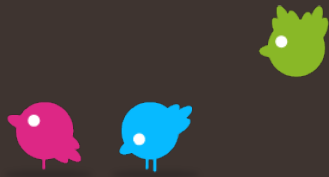
- KDE
- Google Data API
- GTK UI



Getting Involved



SyncML
Server



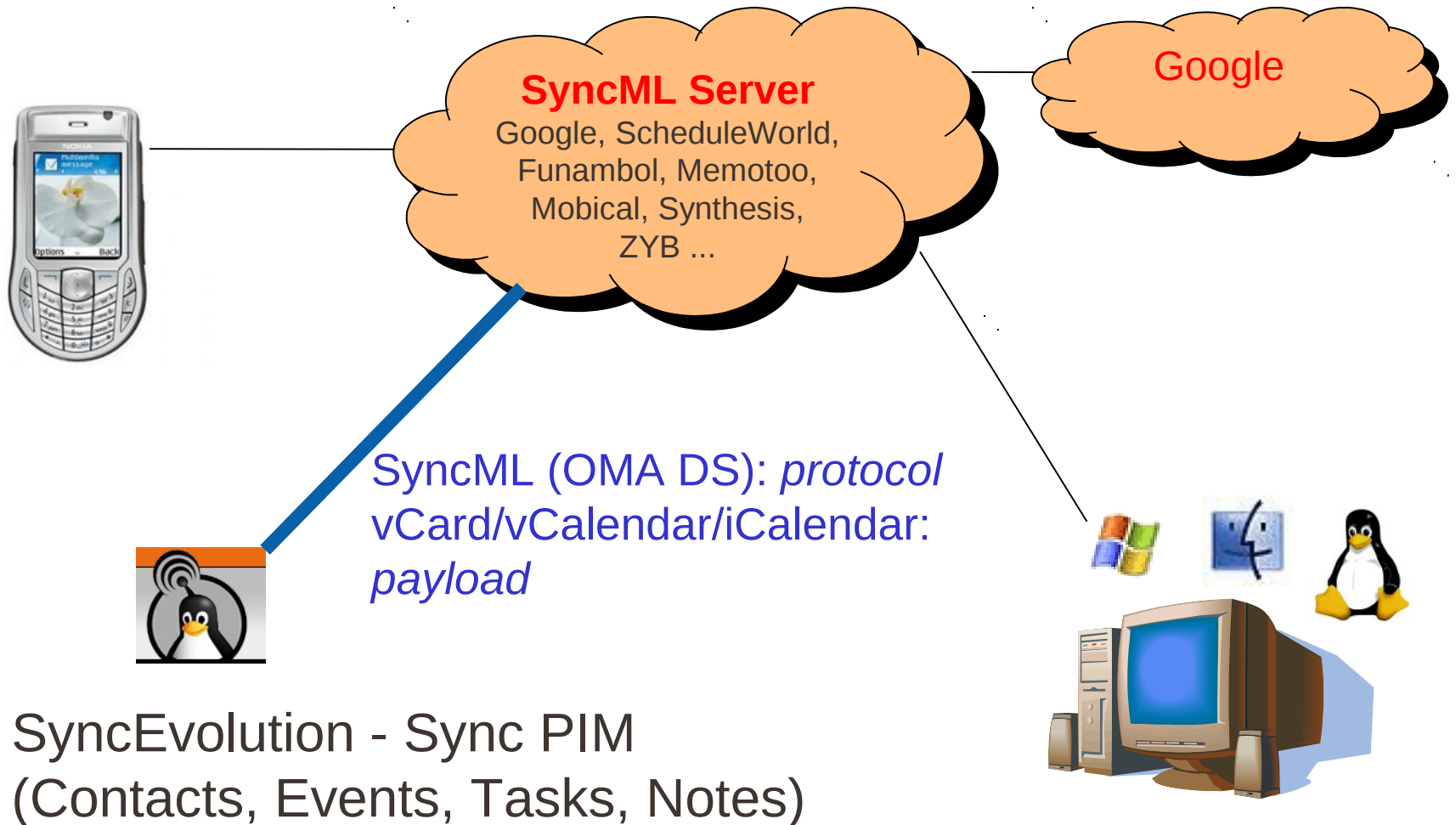
SyncML Clients

PIM Sync Challenges:
It can eat your data?!

Synthesis

- Swiss company with >10y experience with SyncML, owned by the two main developers
- Synthesis SyncML Engine:
 - C++ implementation of client **and server**, data merging and conversion
 - LGPL 2.1+3.0

Over The Air Sync



SyncEvolution - Sync PIM
(Contacts, Events, Tasks, Notes)

PIM Sync + Interoperability Challenges

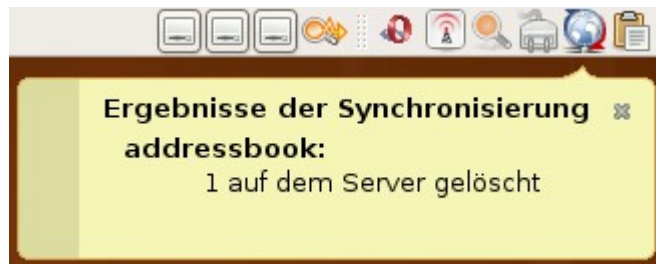
- 1.No globally unique ID.
- 2.Different representation of data.
- 3.Offline updates allowed: what is the most recent data?
- 4.Must support standard formats, including legacy ones (vCalendar).
- 5.Must work with limited knowledge about peers (capabilities, behavior).

SyncML as Protocol

- “slow sync” – client sends all items, server compares, sends updates back
- “normal sync” – exchange of updates
- Resilient – suspend&resume (voluntarily or due to loss of connection), resend messages
- Device Capability description

Usage

- Command line:
syncevolution --configure \
 --sync-property username=foo \
 --sync-property password=bar \
 scheduleworld
syncevolution scheduleworld
syncevolution --sync-properties ?
syncevolution --source-properties ?
- Applet: Genesis, by Frederik Elwert






- GTK GUI ("sync-ui")

Sync-UI: Setup

[Back to sync](#) ☒ ☒

Supported services

To sync you'll need a network connection and an account with a sync service.
We support the following services:

- ▶  Memotoo - [Launch website](#)
- ▶  Mobical - [Launch website](#)
- ▼  **ScheduleWorld** - [Launch website](#)

ScheduleWorld enables you to keep your contacts, events, tasks, and notes in sync.

Username

Password

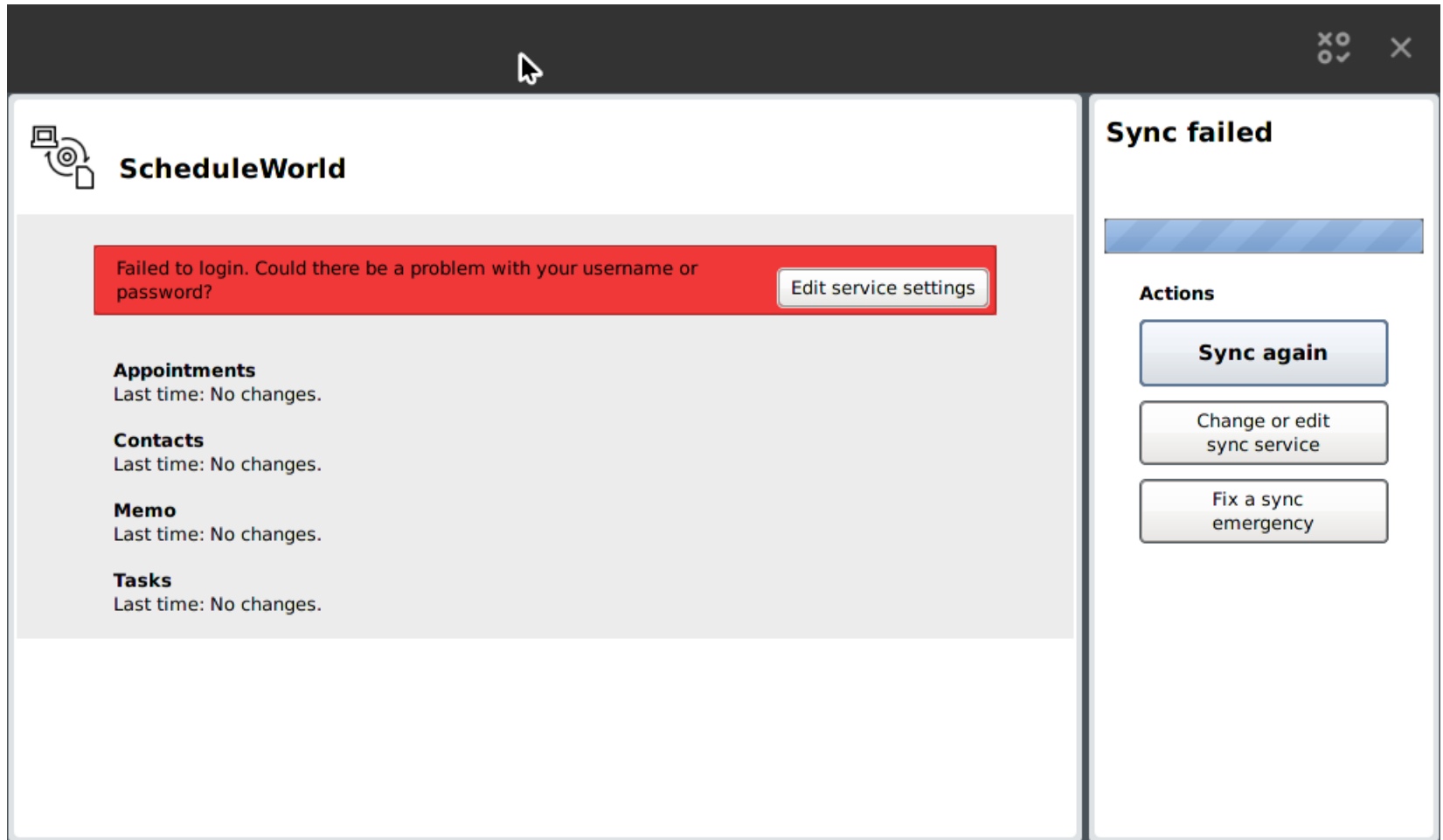
Send changes to ScheduleWorld	<input checked="" type="checkbox"/>	Receive changes from ScheduleWorld	<input checked="" type="checkbox"/>
Sync			
Contacts	<input checked="" type="checkbox"/>	Memo	<input checked="" type="checkbox"/>
Appointments	<input checked="" type="checkbox"/>	Tasks	<input checked="" type="checkbox"/>

Manual setup

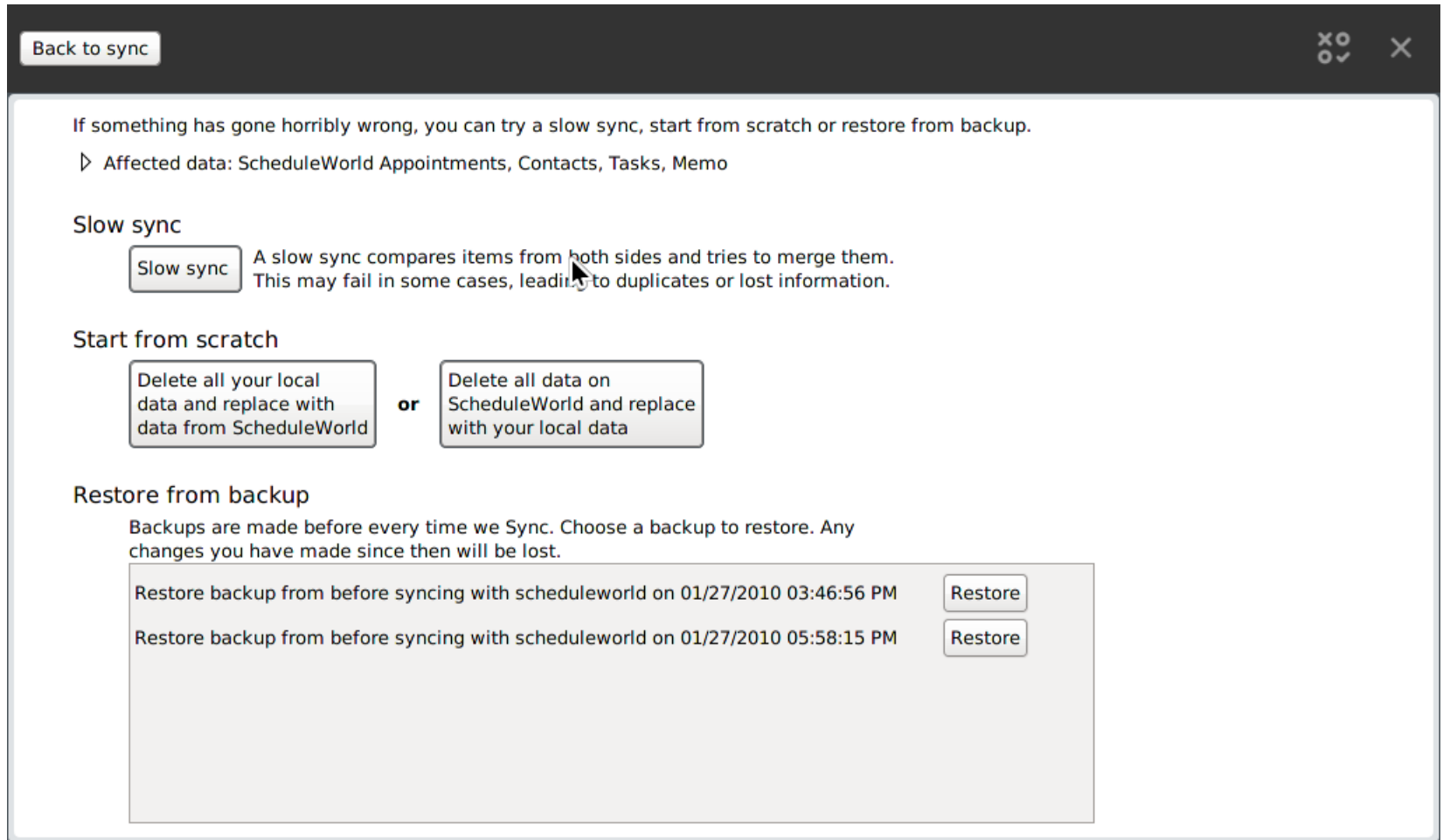
If you don't see your service above but know that your sync provider uses SyncML you can setup a service manually.

[Add new service](#)

Sync-UI: Houston, we've got a problem.



Sync-UI: We've got a solution.



The screenshot shows a window titled "Back to sync" with a close button in the top right corner. The main content area contains the following text and controls:

If something has gone horribly wrong, you can try a slow sync, start from scratch or restore from backup.

▷ Affected data: ScheduleWorld Appointments, Contacts, Tasks, Memo

Slow sync

Slow sync A slow sync compares items from both sides and tries to merge them. This may fail in some cases, leading to duplicates or lost information.

Start from scratch

Delete all your local data and replace with data from ScheduleWorld or **Delete all data on ScheduleWorld and replace with your local data**

Restore from backup

Backups are made before every time we Sync. Choose a backup to restore. Any changes you have made since then will be lost.

Restore backup from before syncing with scheduleworld on 01/27/2010 03:46:56 PM	Restore
Restore backup from before syncing with scheduleworld on 01/27/2010 05:58:15 PM	Restore

